

# Peace United Methodist Church Liturgical Art Committee

Christmas  
Eve  
Art for Worship  
Proposal  
December 24, 2020

RA 109 Chapel Visuals

Project Designer:  
Mele Taumoepeau 'Aho

8:00 p.m. Family Christmas

Justice

Wonderful

Counselor

Lord

Hope

Father

Everlasting

Savior

Love

What good news  
the Lord has  
made known  
to you in  
2020?

Joy

Messiah

Prince of

Peace

Mighty God



# PROJECT PROPOSAL

---

Faith Campus is a diverse multi-ethnic congregation. It is in the heart of Chevy Chase Community on Connecticut Avenue. In less than a year, it gained three new members, an accomplishment in and of itself. Faith fails to leverage the benefits of reaching out to the neighborhood and community at large during the Christmas seasons inviting them to learn and join the many wonderful activities, leadership, and community service all year round.

## 2. Define the Goal

---

All worship services are online. These limits are of striking to its current member who has challenges with getting into the internet. Amidst the upcoming Christmas eve., there is no better time than now to raise its Christmas decoration for visuals, uplift spirits, update the annual programs, renew the outdoor and indoor wreaths, and update the Christmas banners for community outreach.





### 3. Solution and expected outcome

---

- **Money:** more cost savings, better membership service,
- **Time:** more time discussing the decoration ideas with the Art for Worship Committee
- **Authority:** Better branding for Peace Church, staff, and church leadership
- **Efficiency:** Visual art, more creativity, and the inventive gift of talented members



## 4. Evidence of Delivery

---

People receive an annual program with the invitation to step up to a leadership role by volunteering in any exciting ministry. Members who are not active in the online worship will receive the program and track the yearly program activities with a timeline.



## 5. Call to Action

We will work with the facility crew and their supervisor to coordinate the timeline, floorplans, spaces, area for décor, and breakdown schedule.



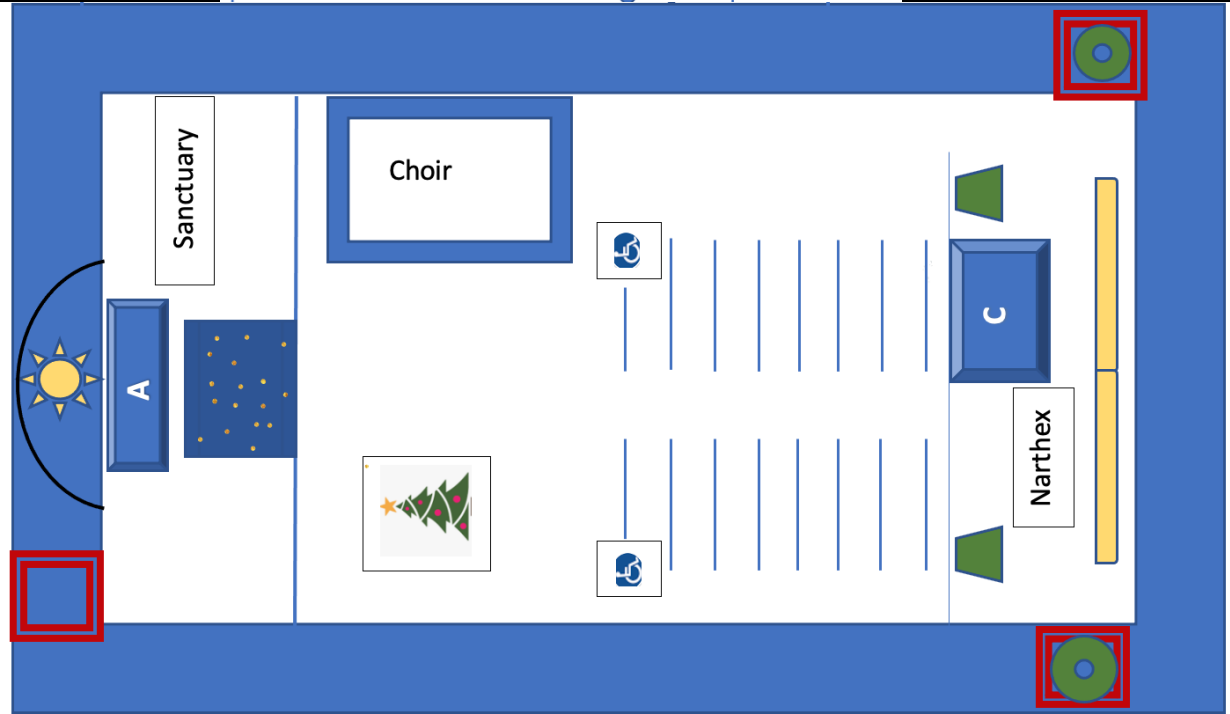
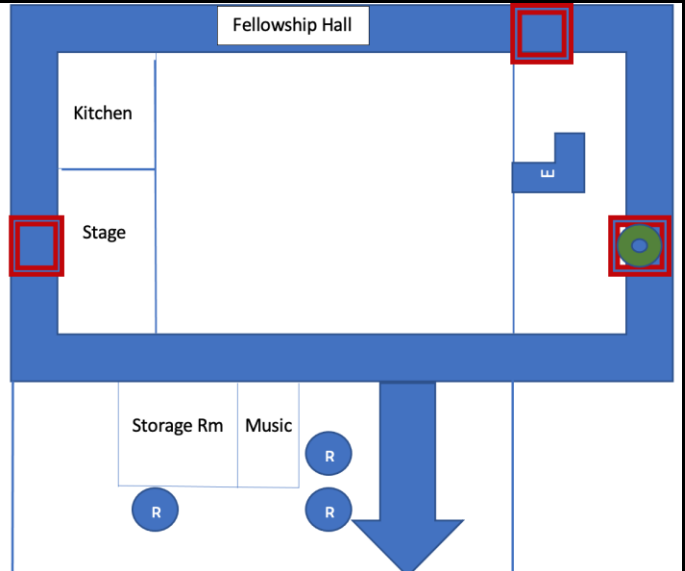
WESLEY  
UNITED METHODIST CHURCH  
SUNDAY SERVICE 11AM  
PASTOR MELE AHG  
BIBLE STUDY  
THURSDAY 7:00  
JAZZ 6:30-8:00PM  
SATURDAY 10:00-12:00




ALL are welcome Sundays at 11am  
for Rockin' Gospel Worship  
& More than Coffee Hour  
NationalChurch.org  
**Black Lives Matter**





# Floorplans



	Table for the elements		Art backdrop		- entrance with or w/out green wreath
	A - Altar				C - Children area

Narthex for the nativity elements



Sanctuary



**BEFORE**



**AFTER**





See slide #14 for more elements to place on the Narthex tables



## Window Decorations









CHRISTMAS  
EVE  
Bulletin

# WELCOME

PEACE UNITED  
METHODIST CHURCH,  
Faith Campus



CHRISTMAS  
EVE  
WORSHIP  
**Bulletin**

DECEMBER 24, 2020

# Peace United Methodist Church, Faith Campus

Peace UMC is called to extend radical hospitality, transform lives,  
and pursue justice.

## All Are Welcome!

Family Christmas December 24, 2020 – 6:00 p.m.

Please sign in using your connection card and drop it in the offering basket as it goes by later in the service. If you would like more information on any of our programs or ministries, please mark your connection card. You may also find more information on our website at: [www.peacechurch.org](http://www.peacechurch.org).

Gathering Music Mary Langley

“Joy Has Dawned” (Getty / Townend, arr. Tornquist)

“We Three Kings” (Hopkins, arr. Bock)

“Winter Solstice” (McLaughlin)

“Hark! The Herald Angels Sing” Charlie Smith & Peter Laser

“Angels We Have Heard on High” Adrian Simpson & Lauren Long

“God Rest You, Merry People All”

Welcome Pastor Mele

Christmas Carol “O Come, All Ye Faithful” UMH #234 v. 1, 3, 6

Lighting of the Advent Candles The Blessing Family

Christmas Carol “Angels We Have Heard on High” UMH #238 v. 1, 3, 4

First Reading Isaiah 9.2-7 Freida Jones

Anthems “Go Tell It on the Mountain” Children’s Choir  
“The Virgin Mary Had a Baby Boy”

Time for Young Disciples Pastor Melissa Bowen

Second Reading Luke 2.1-20 Lauren Green  
*“Let us go now to Bethlehem and see this thing that has taken place,  
which the Lord has made known to us” Lk 2. 15b*

Message Pastor Mele

Christmas Carol “Joy to the World” UMH #246 v. 1, 2, 4

Pastoral Prayer & the Lord’s Prayer Pastor Mele

Anthem “Light of the World” Tina Blake & Andrew

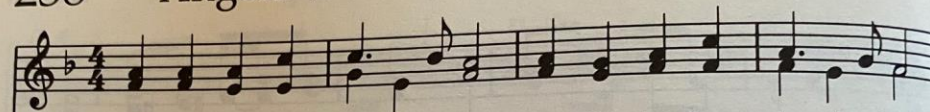
# O Come, All Ye Faithful

1. O come, all ye faith - ful, joy - ful and tri - um - phant, O  
1. A - des - te, fi - de - les, lae - ti tri - um - phan - tes; ve -  
2. True God of true God, Light from Light E - ter - nal,  
3. Sing, choirs of an - gels, sing in ex - ul - ta - tion; O  
\* 4. See how the shep - herds, sum - moned to his cra - dle,

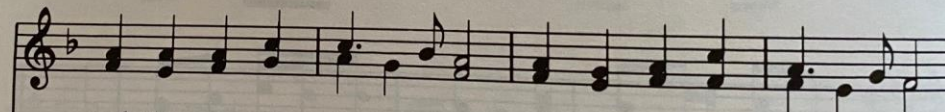
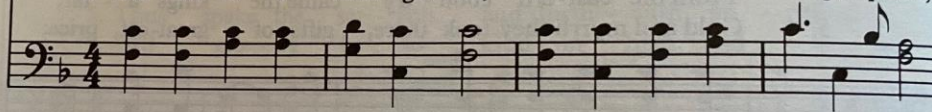
come ye, O come ye, to Beth - le - hem.  
ni - te, ve - ni - te in Beth - le - hem.  
lo, he shuns not the Vir - gin's womb;  
sing, all ye cit - i - zens of heaven a - bove!  
leav - ing their flocks, draw nigh to gaze;

Come and be - hold him,  
Na - tum vi - de

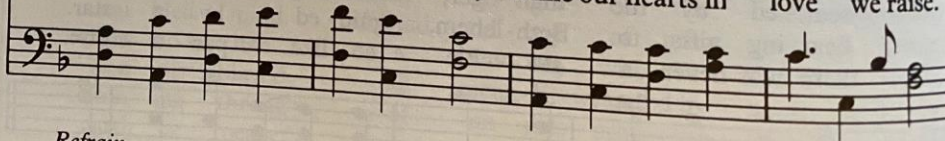
238 Angels We Have Heard on High



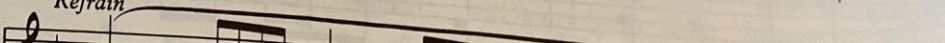
1. An-gels we have heard on high sweet-ly sing-ing o'er the plains,
2. Shep-herds, why this ju - bi - lee? Why your joy - ous strains pro-long?
3. Come to Beth-le - hem and see Christ whose birth the an - gels sing;
4. See him in a man - ger laid, whom the choirs of an - gels praise;



and the moun-tains in re - ply ech - o - ing their joy - ous strains.  
What the glad-some tid - ings be which in - spire your heaven- ly song?  
come, a - dore on bend - ed knee, Christ the Lord, the new - born King.  
Ma - ry, Jo - seph, lend your aid, while our hearts in love we raise.



Refrain



# Joy to the World

OK  
😊

1. Joy to the world, the Lord is come!  
2. Joy to the world, the Sav - ior reigns!  
3. No more let sins and sor - rows grow,  
4. He rules the world with truth and grace,

Let earth re - ceive her King; let  
Let all their songs em - ploy; while  
nor thorns in - fest the ground; he  
and makes the na - tions prove the

# Silent Night, Holy Night

239



1. Si - lent night, ho - ly night, all is calm, all is bright
1. *Stil - le Nacht, hei - li - ge Nacht! Al - les schläft, ein - sam wacht*
2. Si - lent night, ho - ly night, shep-herds quake at the sight;
3. Si - lent night, ho - ly night, Son of God, love's pure light;
4. Si - lent night, ho - ly night, won-drous star, lend thy light;



round yon vir - gin moth-er and child. Ho - ly in-fant, so ten-der and mild,  
*nur das trau-te hoch - hei - li - ge Paar, Hold-er Kna-be mit lock - i - gem Haar,*  
glo-ries stream from heav-en a - far, heav-en-ly hosts sing Al - le - lu - ia!  
ra-diant beams from thy ho-ly face with the dawn of re - deem - ing grace,  
with the an - gels let us sing, Al - le - lu - ia to our King;



**All are welcome!**

**Winter Dec**

Christmas Eve, Friday 24  
Kwanzaa, Dec 26  
Ash Wednesday, Feb 17

Women's Retreat  
February 6 - 7

Sunday Youth Group  
6:00 p.m. St. Paul's Campus  
Youth Confirmation Initial Meeting,  
Sunday, Feb 07

**Spring Mar**

Easter, Sunday, Apr 04

Adult Bible Study  
Thursdays 7:00 -8:30 p.m.

**Summer Jun**

Appalachia Mission Trip  
July 15-18

**Autumn Sept**

UMW Sunday, Sept. 19  
Christmas Pageant, Dec 19

Faith Community BBQ  
Sunday Sept. 12, 12:30 p.m.

Science & Religion  
Sundays, 3:00 p.m.

*SERVE*

Five Pillars:  
Serve, Service, Worship, Care, Learn  
Blood Drive  
Food Drive  
Diaper and Bike Drive

*GIVE*

Jazz @ Faith, 4<sup>th</sup> Saturdays,  
6:00 pm  
Gun the Violence Concert  
September, Saturday 18

*STAFF*

Mele Taumopeau Aho, Pastor  
[maho@peacechurch.org](mailto:maho@peacechurch.org)  
Paula Smith, Operations  
[Paula@faithcampus.org](mailto:Paula@faithcampus.org)  
Melissa Bowen, Youth Director



# BUDGET & MATERIAL LIST

Supplies:		On Stock
Cardboard for 2 angels		*Nativities
Candles		* Window wreaths
Wreaths		* Christmas tree
Paper for the front backdrop		
Glue		
Scissors		
Lights		
Nails		
Strings		
Sub Total	\$250.00	
Miscellaneous expenses	\$750.00	* Not expenses
<b>TOTAL</b>	<b>\$1,000.00</b>	

\*\*Church names are edited for this project.

## Art Committee PLANNED EXPENSES

	October	November	December	Total
<b>COMMITTEE COSTS</b>	\$ 504.00	\$ 504.00	\$ 600.00	\$ 2,000.00
Worship with Arts	\$ 100.00	\$ 100.00	\$ 400.00	\$ 1,650.00
<b>COMMUNICATION COSTS</b>	\$ 300.00	\$ 400.00	\$ 300.00	\$ 3,000.00
Web site hosting				\$ 100.00
Web site updates				\$ 50.00
Collateral preparation			\$ 100.00	\$ 100.00
Collateral printing			\$ 100.00	\$ 200.00
Marketing events		\$ 200.00	\$ 100.00	\$ 500.00
Miscellaneous expenses				\$ -